



CSS 2.0 MIGRATION GUIDE

The Copernic
Power for your
business content.



copernic
Server Search



1 Migration Overview

The version 2.0 of Copernic Server Search (CSS) uses the power of the new personalized search experience of Copernic Desktop Search. You will be able to enjoy rich, out-of-the-box search extensions to find the information relevant to your organisation.

These extensions uses new, more powerfull extractors. To be able to continue using the search feature, actual index needs to be recreated since the actual index content is incompatible with the actual extractors.

Please follow this quick guide to ensure a smooth migration for your users.

2 Copernic Server Search 2.0 Index Creation

To ensure a smooth migration without down time, we recommend to temporarily install the Copernic Server Search 2.0 on a different server that the actual Server Search is install on. This will ensure that the search feature will remains accessible while the new index is created.

On the actual server

2.1 Backup configuration from the actual server:

To preserve the actual configuration, you can copy the configuration folder from the CSS 1.0 machine to the new temporary machine.

- Close Copernic Server Search application
- Backup this folder. If the folder size is too large, you can omit the Index sub-folder since the index needs to be recreated:

C:\Users

On the new temporary server

2.2 Copy configuration to the temporary server:

- Copy the backedup folder on the new machine at this location:

C:\Users

2.2 Download the installation file:

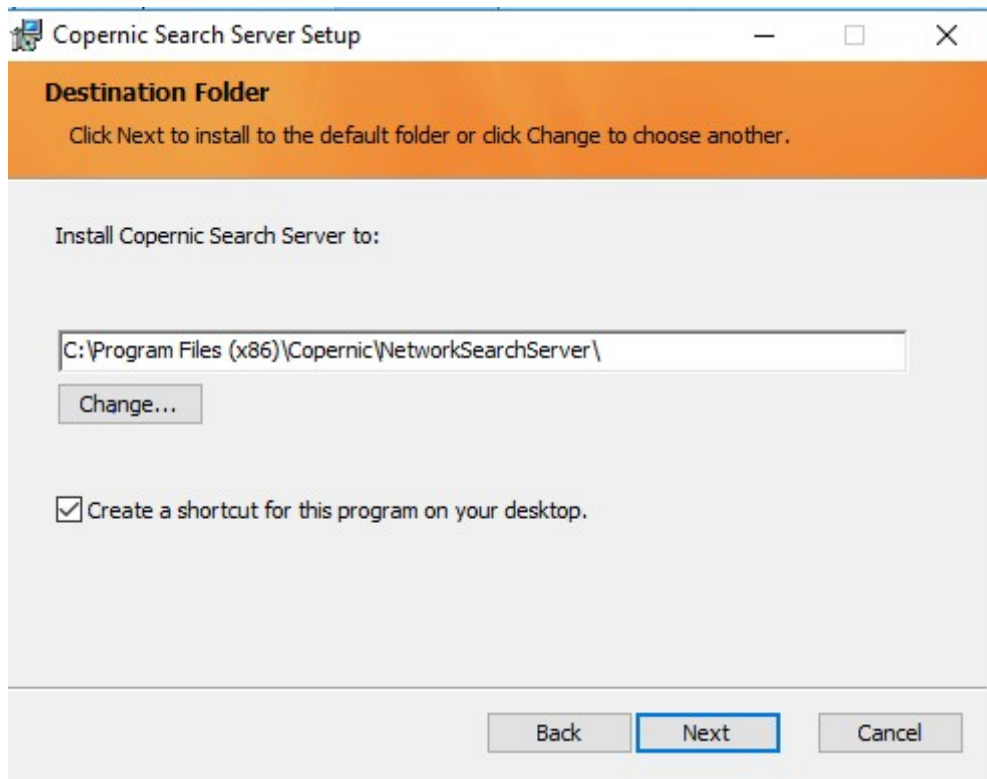
<http://go.copernic.com/?dest=css2serverinstaller>

<http://go.copernic.com/?dest=css2servereaupinstaller> (EAUP)

2.3 Start the installer



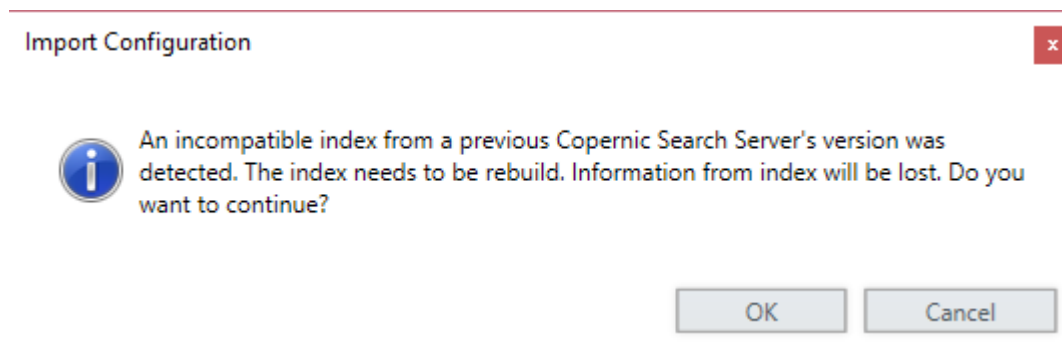
- 2.4** Select the location of the Destination folder on the server. It needs to be on a local hard drive



- 2.5** Launch the installation

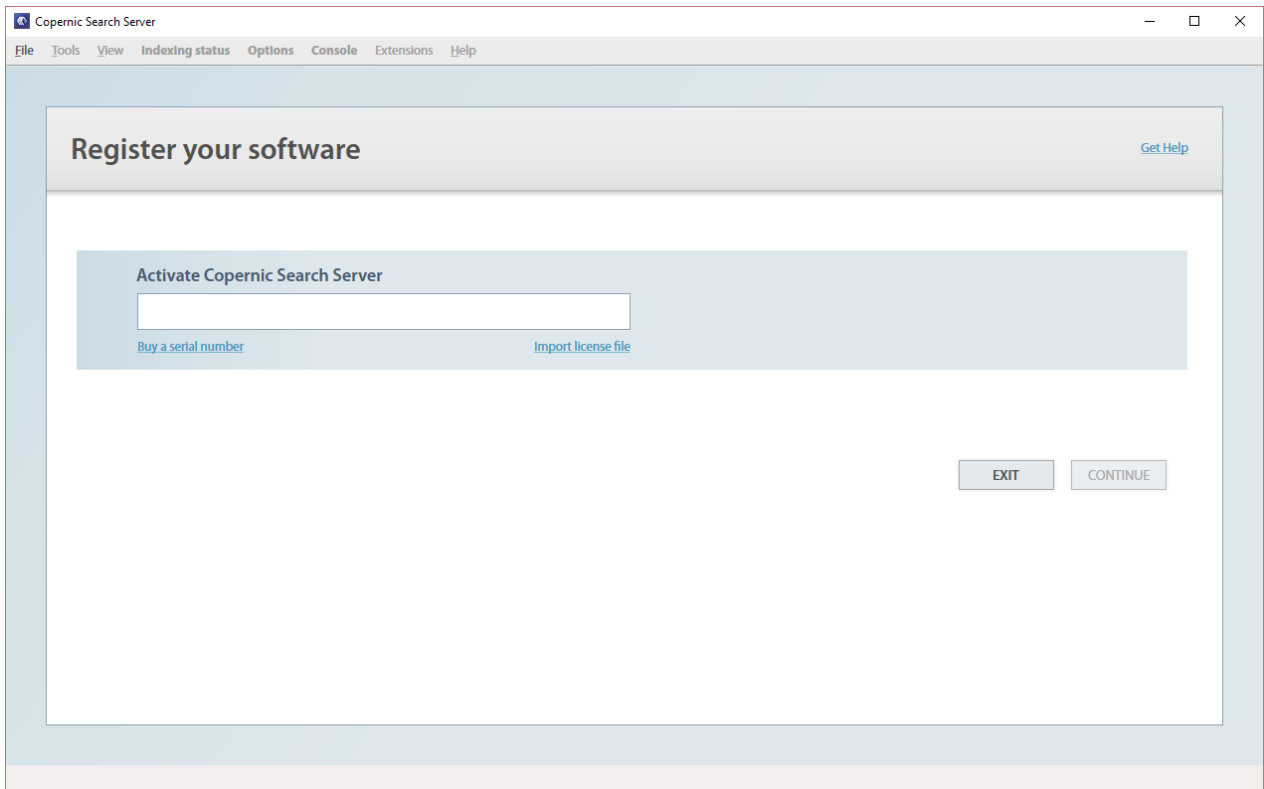
- 2.6** Finish the installation

- 2.7** Launch Copernic Server Search. You will be prompted to rebuild the index from the old configuration. Click OK to continue.





- 2.8** Now, you will be prompted to enter a serial number to register your Server license.



- 2.9** Enter a valid serial number. If you have a valid Copernic Server Search 1.0 subscription, you can use the provided serial number here. If you are using a server not connected to the internet, please proceed with the offline activation by sending us the server license file.
- 2.10** Once the registration complete, you will get to the Console screen.
- 2.11** Let the indexation process run to completion. To speed up the process, you can change the "Indexing Performance" by choosing the "Unrestricted" option.
- 2.12** Once the indexing process is completed, you can proceed with the production server migration.



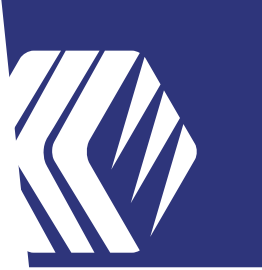
3 Copernic Server Search 2.0 upgrade

On the temporary server

- 3.1 Close Copernic Server Search
- 3.2 Backup the configuration from the temporary server:
 - **`C:\Users\<username>\AppData\Local\Copernic\NetworkSearchServer`**

On the actual server

- 3.3 Download the installation file:
<http://go.copernic.com/?dest=css2serverinstaller>
<http://go.copernic.com/?dest=css2servereaupinstaller> (EAUP)
- 3.4 Close Copernic Server Search
- 3.5 Start the installer
- 3.6 Launch the installation
- 3.7 Uncheck the "Launch Copernic Server Search" checkbox to not start the application and finish the installation
 - ***If you forgot to uncheck this option, click the Cancel button when the index migration message appears to not start the server.***
- 3.8 Copy configuration backed up from the temporary server to the actual server overwriting existing files:
 - **`C:\Users\<username>\AppData\Local\Copernic\NetworkSearchServer`**
- 3.9 Launch the application



4 Copernic Desktop Server Search – Client 7.0 upgrade

CDS is made available as a Windows Installer (.msi) file and as a self-executing (.exe) file. For network deployment, it is suggested to use the .msi installer. The .exe version is provided for convenience purposes.

In an enterprise environment, CDS can be deployed to all users at the same time using a deployment tool such as Active Directory.

Enterprise deployment

4.1 Updating the ADMX file and GPOs

- Log on the domain controller.
- From the MSI package (.zip), open the "CopernicDesktopSearch_AdministrativeTemplate" folder and copy the .admx files in "C:\Windows\PolicyDefinitions" directory, english .adml files in "C:\Windows\PolicyDefinitions\en-US" and german .adml files in "C:\Windows\PolicyDefinitions\de-DE" folder.
- Open the active directory software (such as Microsoft Management Console (mmc.exe)).
- Select your organization unit.
- Right click on the GPO folder and select properties from the drop down list.
- Once the properties open, select your GPO group and click on Edit button.
- Opens "Computer Configuration" or "User Configuration" based on your actual setup and expand the "Administrative Template" then "Copernic Desktop Search" nodes.
- Under Installer node, opens the "License Keys File" parameter. Enable this option and enter your "Copernic Server Search - Client" organization serial number then click OK.
- **NOTE:** If you do not want your clients to be able to automatically upgrade the software, you can enable the "Block Software Updates" option under the Advanced node.

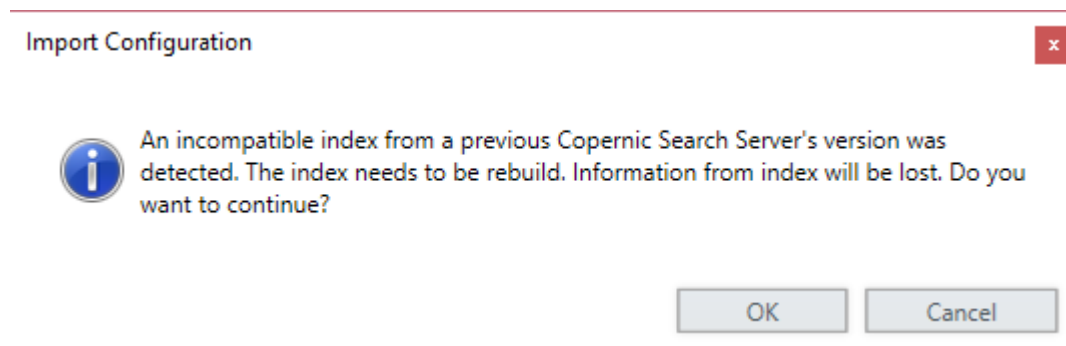


4.2 Updating the MSI package

- In the “Group Policy Management Editor” opened in the previous steps, expand the “Software Settings” node and right click on “Software Installation”. Then Click on New → Package and browser to the new MSI package.
- After selecting the package, select the Advanced method the click OK.
- In order to customize the language of CDS, select the Modifications tab and click on Add and select the desired .mst file included in the .zip package.
- Click the “Upgrades” tab and “Add...” button.
- Add the “Copernic Desktop Search Enterprise 1.0” package and select the “Uninstall the existing package, then install the upgrade package” option.

5 Starting Copernic Server Search – Client 2.0

- 5.1** On updated client computers, launch “Copernic Server Search - Client”. You will be prompted to rebuild the local index from the old configuration. Click OK to continue. This is only for the local client index, the server index is not affected by this.



If you have any questions, you can submit a ticket:
<http://www.copernic.com/en/support/contact/>