



QUICK START GUIDE

The Copernic
Power for your
business content.



copernic
Search Server



1 Installation Overview

The Copernic Search Server (CSS) runs as an application on a server or any PC acting as a server. This guide provides information regarding the installation and configuration. The major tasks involved in installing the Search Server are:

- Installing & configuring the Search Server application
- Installing and configuring the Copernic Enterprise Client

2 Requirements

Copernic Search Server | Components and Version

PLATFORM	Windows Server 2008 R2, 2012, 2012 R2 and 2016 Windows 7, 8, 8.1, 10 (64-bit recommended)
LICENSING	One license per server
LANGUAGES	English, French, German, Spanish, Dutch, Portuguese, Italian, Russian, Mandarin, Japanese and Korean
MEMORY	8 GB or more is recommended
HARD DISK SPACE	900 MB for installation. At least 2 GB for the index
WEB BROWSER	Microsoft Internet Explorer 10 and up Firefox 49 and up Google Chrome
INTERNET CONNECTION	An internet connection is required to activate a license. (Offline activation may be possible)



Copernic Desktop Search Enterprise Client

Components and Version

PLATFORM

Windows 7, 8, 8.1, 10 (64-bit recommended)

LICENSING

One license per user

LANGUAGES

English, French, German, Spanish, Dutch, Portuguese, Italian, Russian, Mandarin, Japanese and Korean

MEMORY

8 GB or more is recommended

HARD DISK SPACE

900 MB for installation. At least 2 GB for the index

WEB BROWSER

Microsoft Internet Explorer 10 and up
Firefox 49 and up
Google Chrome

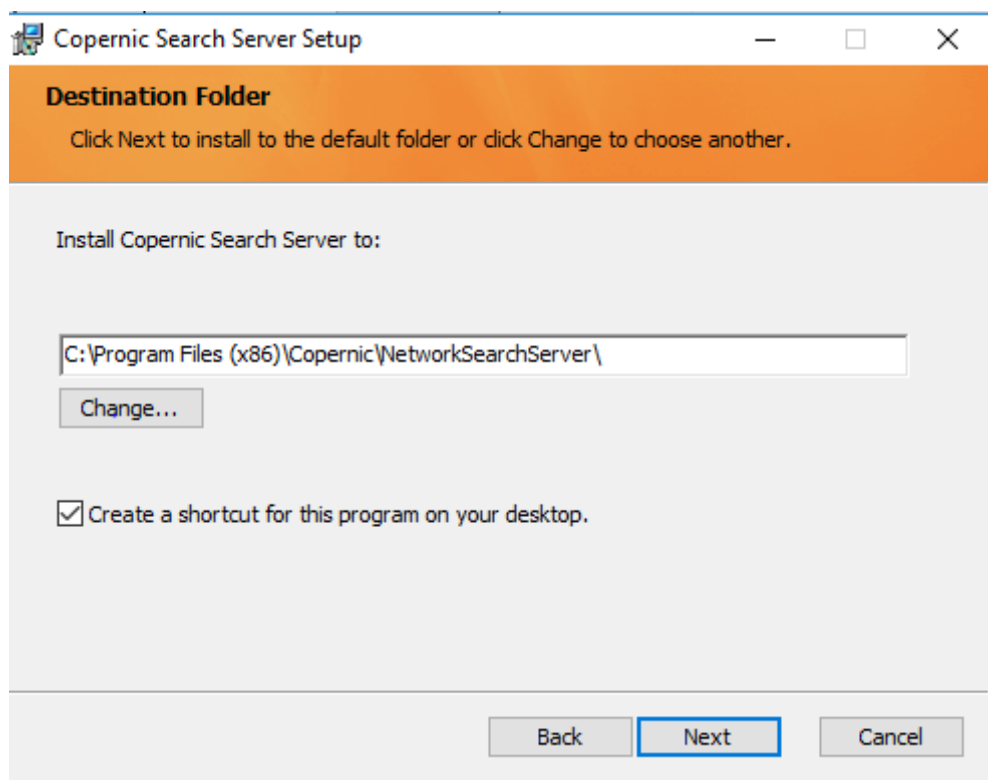
INTERNET CONNECTION

An internet connection is required to activate a license. (Offline activation may be possible)



3 Copernic Search Server Installation & Configuration Steps

- 3.1 Download the installation file:
<http://go.copernic.com/?dest=css2serverinstaller>
- 3.2 Start the installer
- 3.3 Select the location of the Destination folder on the server. It needs to be on a local hard drive

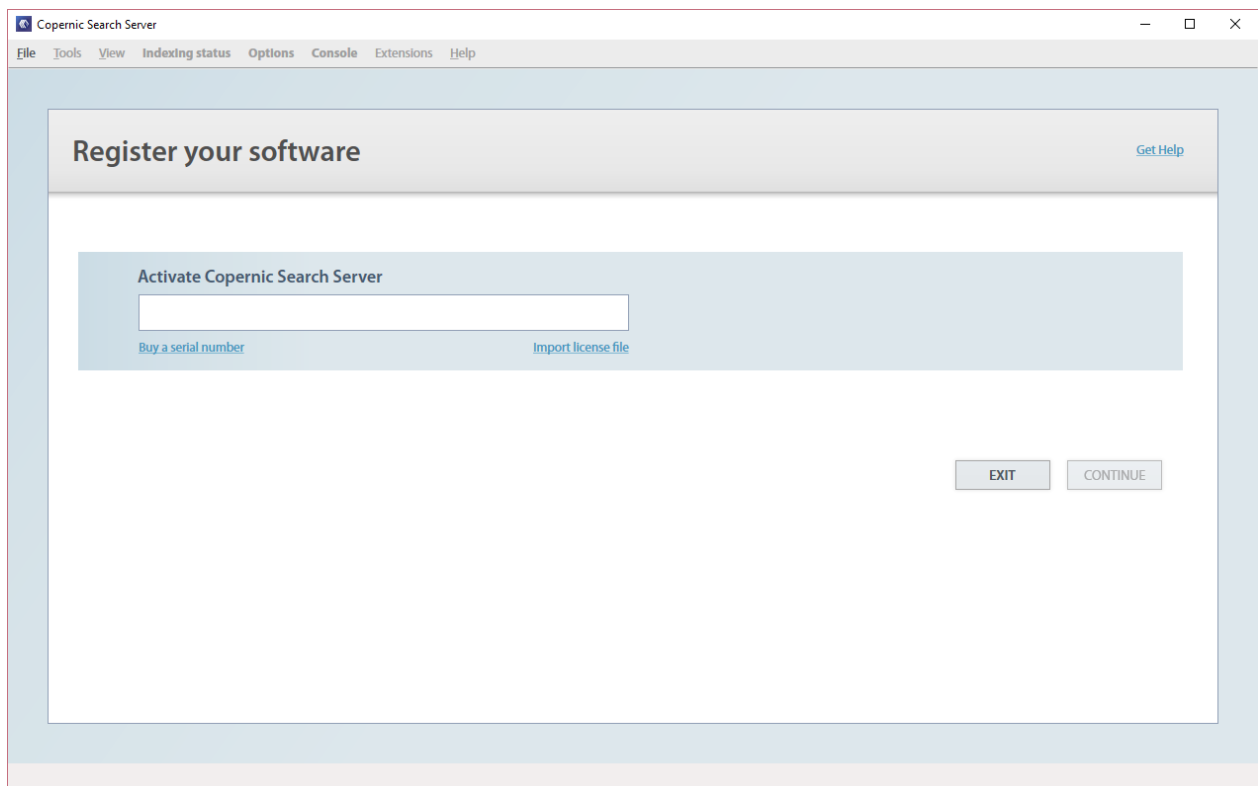


- 3.4 Launch the installation
- 3.5 Finish the installation



4 Launch Copernic Search Server

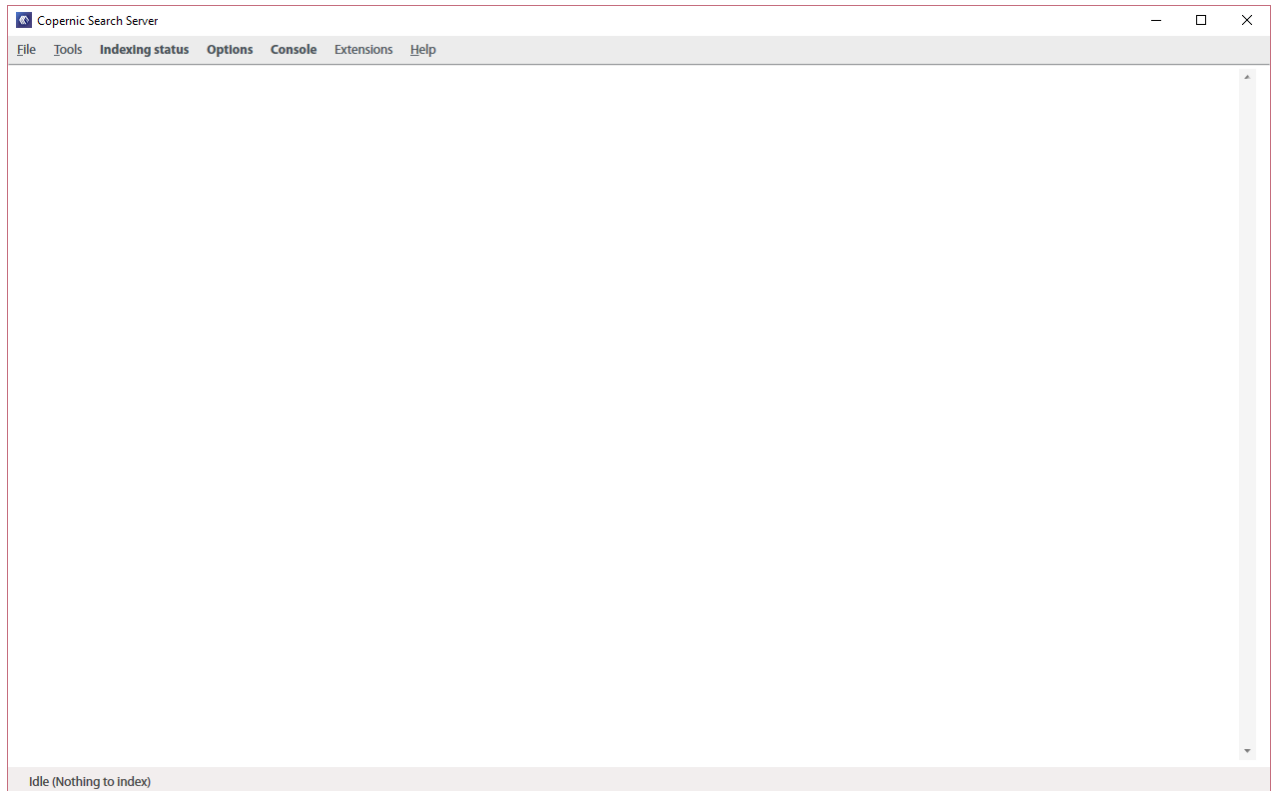
- 4.1** You will be prompted to enter a serial number to register your Server license.



- 4.2** Enter a valid serial number. If you are using a server not connected to the internet, please proceed with the offline activation by sending us the server license file.



- 4.3** Once the registration complete, you will get to the Console screen. This window will list the requests from the Copernic Desktop Search Enterprise clients:



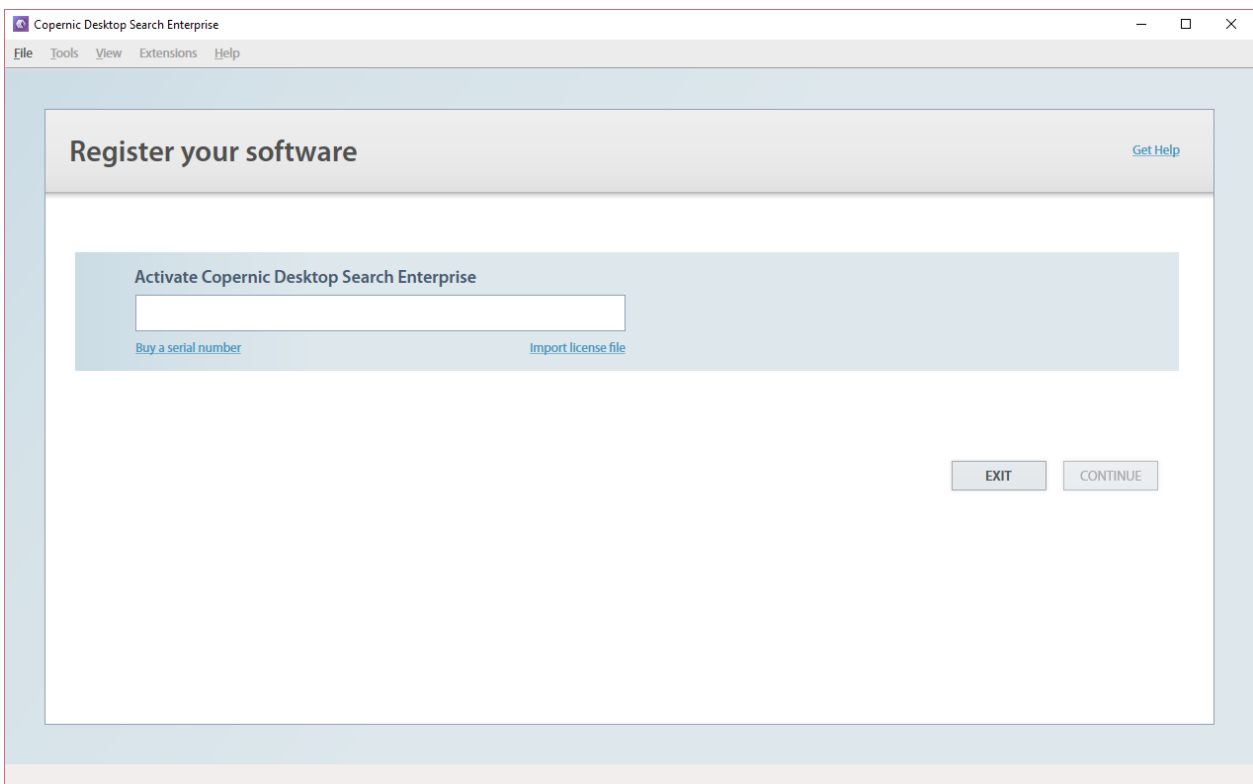
- 4.4** To configure the data to index, click the "Options" menu.
- **Emails & Organizer:** You can add shared mailboxes or archives PST files.
 - **Files:** You can add or remove any folders on the server. Make sure to specify a path using UNC or network name. This path must be accessible from users for preview or open functionalities.
 - **Indexing & Performance:**
 - o **Schedule:** You may change the Refresh interval to schedule when each category is indexed.
 - o **Daily indexing tasks:** You may change the time setting of when the daily scan of all files & emails occurs.
 - o **Extraction threads:** You may specify the number of parallel file extractions. We recommend to not exceed 2.
 - o **Security:** This is the Active Directory security feature. Unchecking this options will disable the file access rights functionality.
 - **Advanced:**
 - o **File Types:** You may add or remove any file type from the supported list.
 - o **Outlook Plugin:** You can select the plugin used to extract Outlook content. A restart of the application and Outlook is required.



5 Copernic Desktop Search Enterprise Client Installation & Configuration Steps

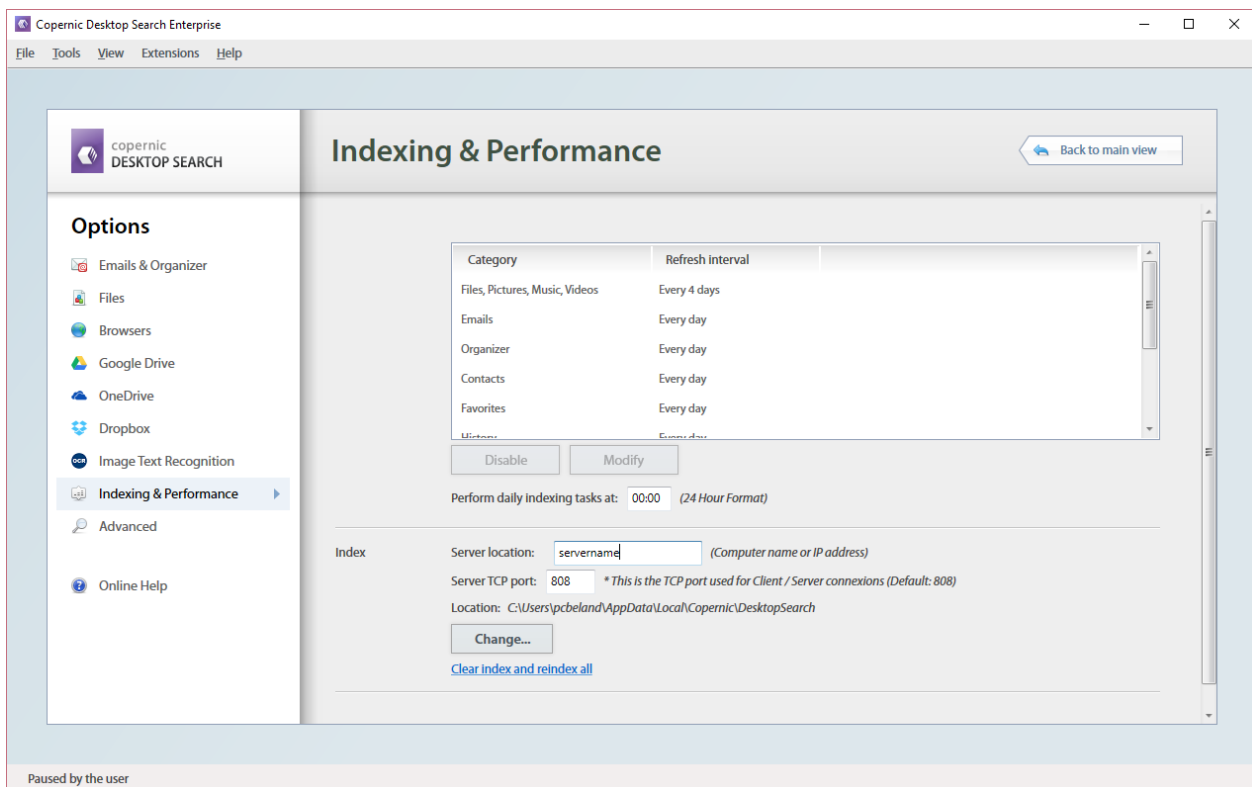
To install the Copernic Desktop Search Enterprise Client :

- 5.1** Download the installation file:
<http://go.copernic.com/?dest=css2clientinstaller>.
- 5.2** If you want to deploy using GPOs, please download the msi file:
<http://go.copernic.com/?dest=css2clientmsi>
- 5.3** Start the installer
- 5.4** Launch Copernic Desktop Search Enterprise Client
- 5.5** Enter a valid serial number. If your computer is not connected to the internet, please proceed with the offline activation by sending us the client license file.





- 5.6** To configure the connection to the Copernic Search Server index, you need to go to Tools – Options – Indexing & Performance. Under the Index Section, you need to enter the Index Server location:



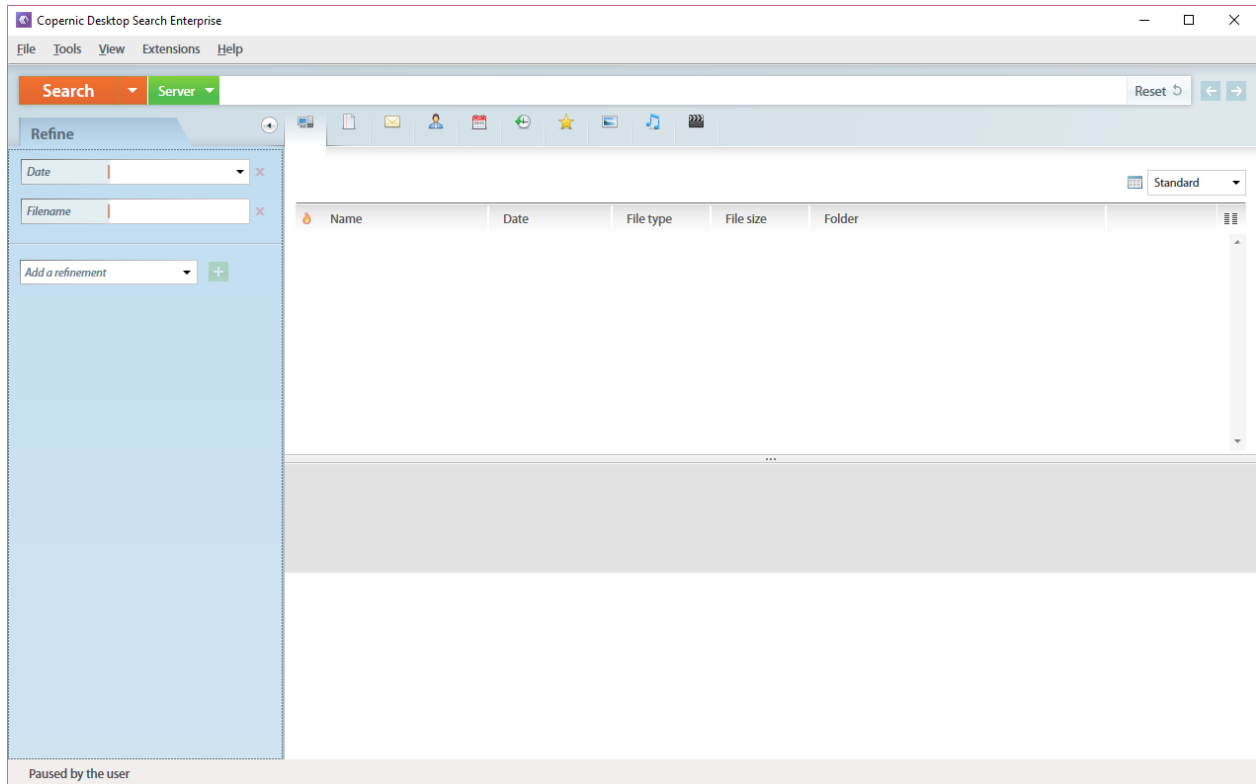
The index server location must be one of the following:

- Server name (machine name)
- IP Address

- 5.7** Once the index server location is entered, uses the “Back to main view” button to save the setting.



5.8 Now the user will be able to search the local index and the server index. To switch between the local and server indexes, there is a green drop down next to the Search button.



Now, you should be all configured and ready to go.

If you have any questions, you can submit a ticket:
<http://www.copernic.com/en/support/contact/>